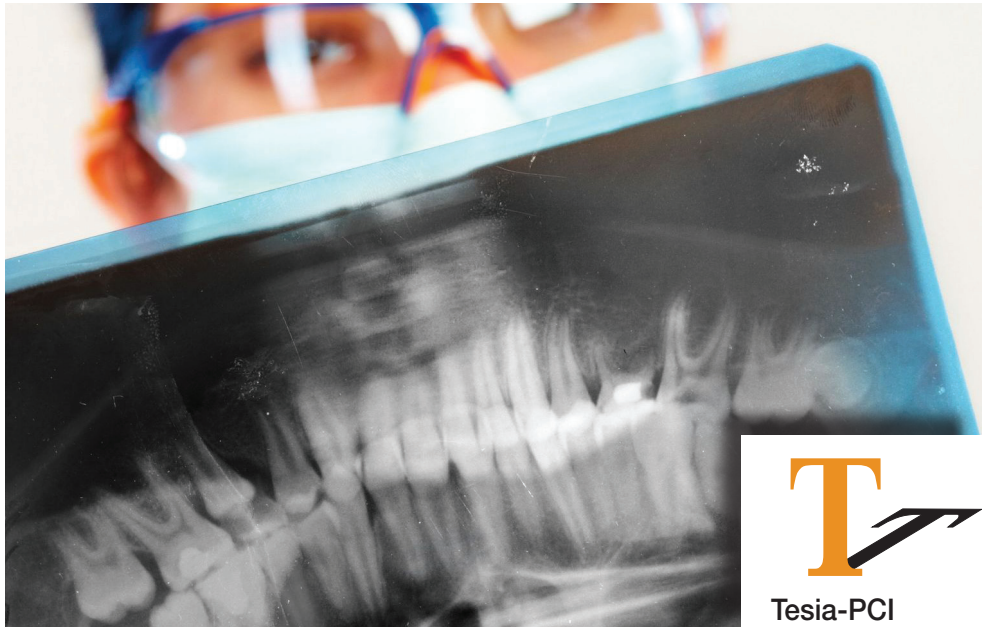


Claims with attachments

eAttachment



Tesia-PCI's eAttachment service allows providers to efficiently transmit x-rays and any documentation required by payors to adjudicate claims

Some notable Payors you can reach

Met Life
United Concordia
Dominion Dental Plan
Capital Blue Cross of Pennsylvania

APIPA-CRS
Delta Dental of MI
Delta Dental of TN
Delta Dental of OH
Delta Dental of IN
Delta Dental of NJ
Delta Dental of CT
Delta Dental of MO
Delta Dental of SC
Delta Dental of California/Tricare Retiree Dental
First Dental Health (FDH)
Florida Combined Life (FCL)
HealthComp (CA)
HMSA / BCBS of HI
Hawaii Medical Assurance Association (HMAA)
Hawaii-Western Management Group (HWMG)
Local 1 Pointers & Caulkers
Local 1-0318 Health & Welfare Fund
Local 1034
Local 153 Discount Dental Plan
Local 153 Health Fund
Local 1730 I.L.A.
Local 1969 Civil Service Employees
Local 306 Municipal Employees
Local 802 Welfare Fund
Local 807 Labor-Management Health Fund
Renaissance Life and Health
Safeguard Dental Plan

... and many more!

Claims with attachment requirements don't have to be the reason for delays in payments. Tesia-PCI offers dental providers a cost-effective and reliable method of transmitting supporting documentation to insurance plans.

Why use the Tesia-PCI eAttachment Service?

- It's FREE! — There are no costs to send attachments
- Just use your TesiaBridge software—it's an "all in one" solution for your claims, eAttachments and eligibility and benefit needs
- Interfaces with your existing practice management software system
- Three options to attach an image: screen shot, upload an image file, and activate your scanner to capture image.
- Flexibility to add multiple attachments (xray, documents, EOBS)
- Complete installation, support and training included



Get Started

No start up, monthly or hidden fees. Get started with eAttachments today – call Robert Porterfield at (800) 724-7240 ext 4703.

